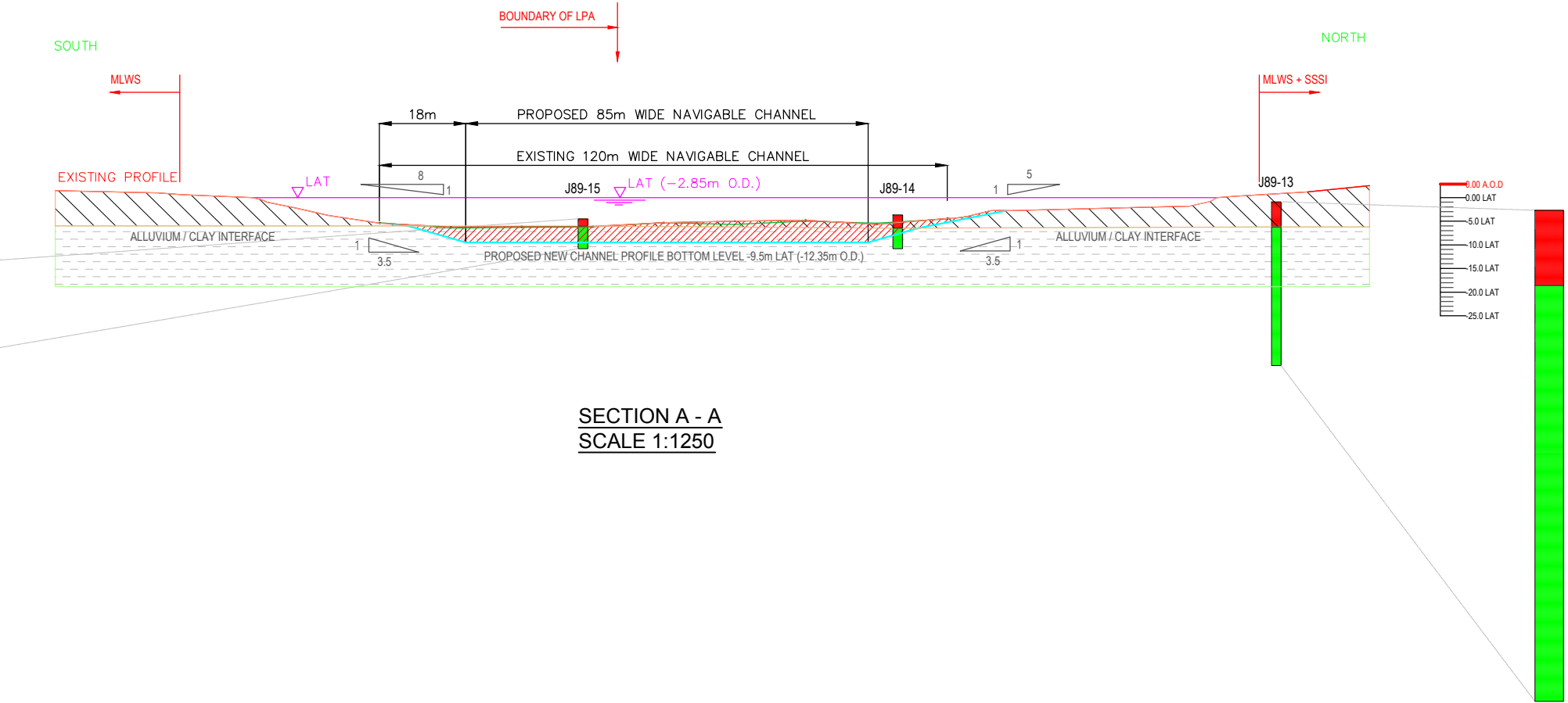


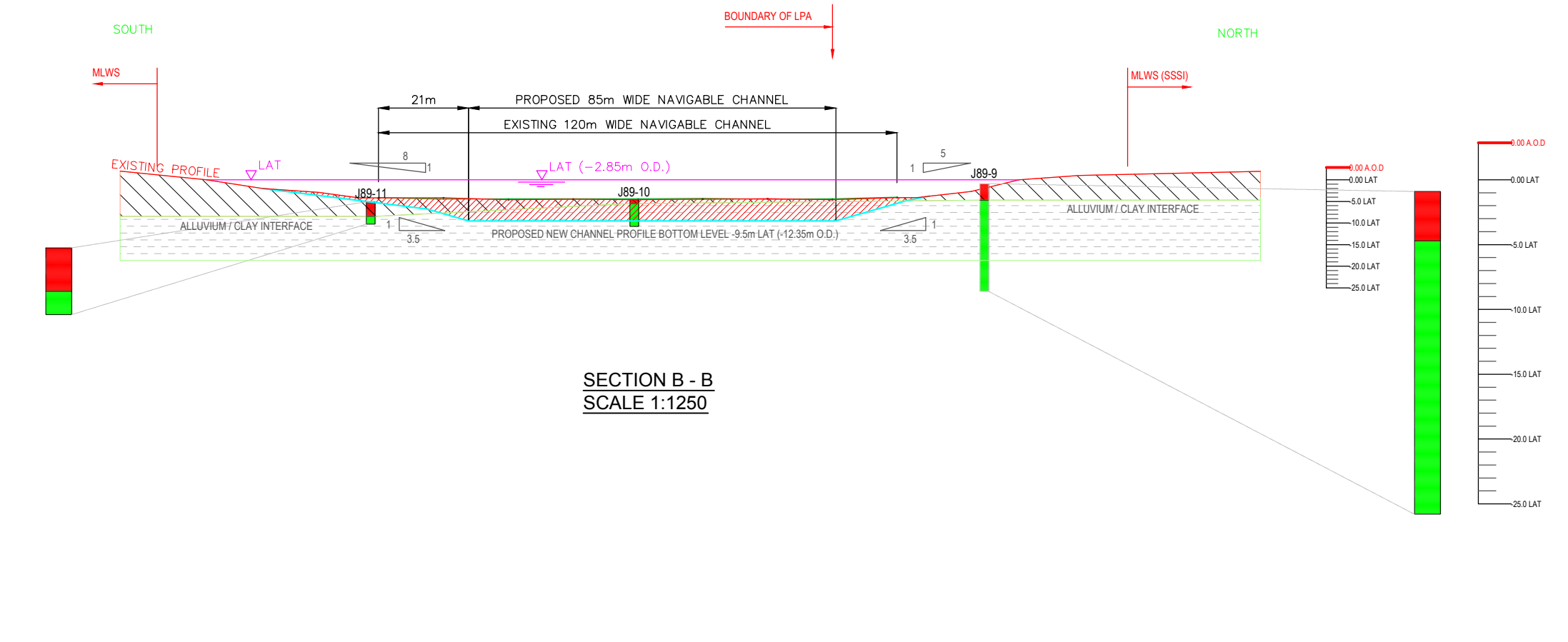
Setout Points				
Ref	Easting	Northing	Latitude	Longitude
S01	452341.7217	526629.9193	54°37'55.50"N	001°11'26.53"W
S02	452479.0978	526721.4511	54°37'58.43"N	001°11'18.78"W
S03	452501.1165	526687.2953	54°37'57.32"N	001°11'17.57"W
S04	452521.0182	526599.5199	54°37'54.50"N	001°11'16.52"W
S05	452789.5815	526662.8149	54°37'56.44"N	001°11'01.48"W
S06	452815.3733	526668.8940	54°37'56.62"N	001°11'00.08"W
S07	452767.7299	526549.9357	54°37'52.79"N	001°11'02.78"W
S08	452916.5813	526629.7842	54°37'55.32"N	001°10'54.41"W
S09	453428.7306	526611.8935	54°37'54.54"N	001°10'25.88"W
S10	453420.8555	526527.1203	54°37'51.80"N	001°10'26.38"W
S11	454119.8625	526421.2990	54°37'48.10"N	001°09'47.47"W

Setout Points				
Ref	Easting	Northing	Latitude	Longitude
1	452375.00	526580.00	54°37'53.91"N	001°11'24.67"W
2	452510.00	526670.00	54°37'56.77"N	001°11'17.08"W
3	452794.76	526750.71	54°37'57.57"N	001°11'01.23"W
4	452813.00	526698.23	54°37'57.56"N	001°11'00.17"W
5	452894.01	526644.70	54°37'55.78"N	001°10'55.69"W
6	453615.00	526619.00	54°37'54.70"N	001°10'15.50"W
7	454103.00	526509.00	54°37'50.95"N	001°09'48.36"W
8	454139.00	526378.00	54°37'46.70"N	001°09'40.61"W
9	453600.00	526500.00	54°37'50.86"N	001°10'16.42"W
10	452740.00	526530.00	54°37'52.15"N	001°11'04.35"W
11	452510.00	526375.00	54°37'47.22"N	001°11'17.27"W
12	452375.00	526580.00	54°37'53.91"N	001°11'24.67"W

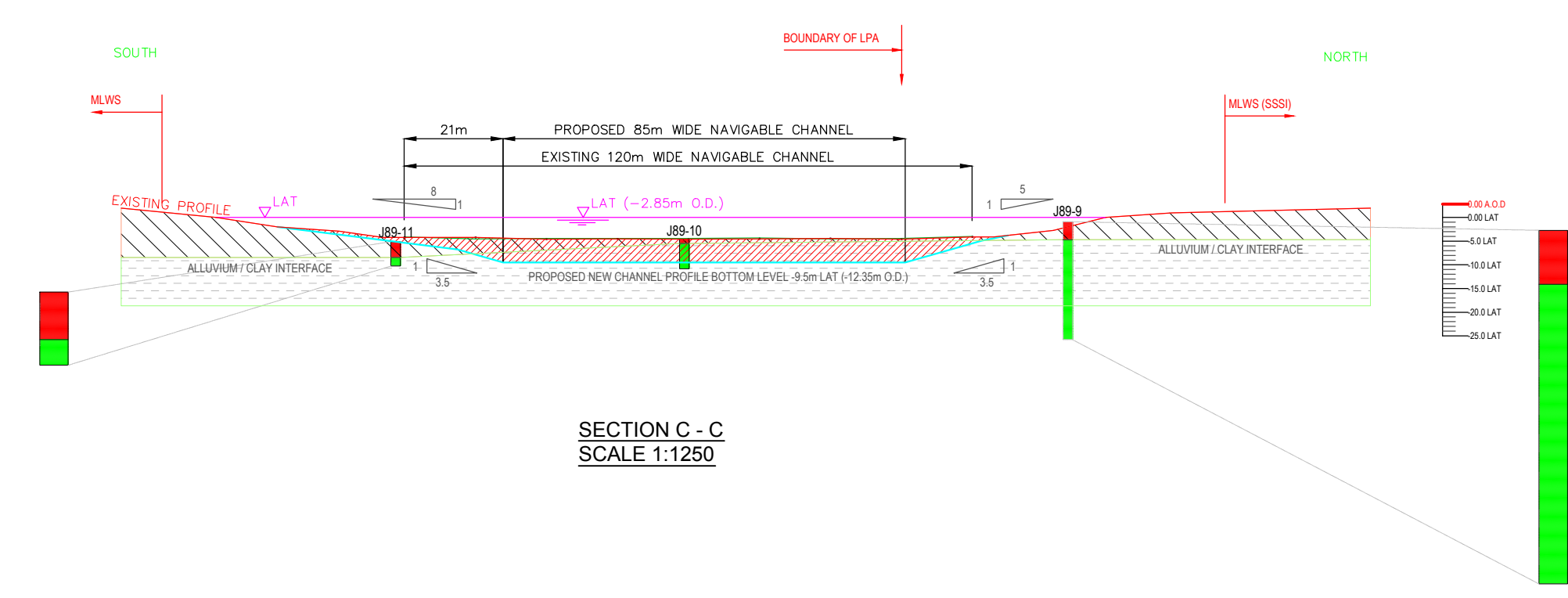
KEY	Area
Basin entrance (-9.5 to -6.5m CD)	9,690m ²
Holding basin (-9.5m CD)	63,929m ²
85m wide channel (-9.5m CD)	
SC1	37,296m ²
SC2	37,504m ²
SC3	43,517m ²
120m wide channel (-6.5m CD)	
SC1	16,624m ²
SC2	15,545m ²
SC3	14,750m ²
Quay 10 & 11 (-15m CD)	27,255m ²
Total	266,110m²



SECTION A - A
SCALE 1:1250



SECTION B - B
SCALE 1:1250



SECTION C - C
SCALE 1:1250

Rev.	Date	Comments	Prep.	Chk.	Appr.
A	27/10/2016	For Approval	JHS	CH	RE



Project:	ABLE Seaton Channel
Client:	ABLE UK Limited
Drawing Title:	Dredge Locations 2016

FOR APPROVAL			
Scale:	Drawn By:	Checked By:	Approved By:
As Shown (B1)	J Hopman	C Harrison	R Crum
Date:	27/10/2016	01/11/2016	01/11/2016
Drawing No:	ASC-001-00009	Revision:	A